

CONTENTS

PAGE

Timeline of the War in the East 1866	3
The Situation in the Hawkes Bay Military District 1866	4
Battle of Ōmarunui– 12th October 1866—Order of Battle and description	5–6
Battle of Petane - 12th October 1866—Order of Battle and description	7
Inland Expedition —15th—19th October 1866—Into the Hinterland	8
War in the East Campaign Points, Scenarios and Forces table	9
Troop Organization and Definitions—Hawkes Bay, Hauhau Forces &	10
Scenario—Raid on the Armoury (NEW Raid scenario)	11
Scenario—Battle of Omarunui (Attacking a riverside Pa)	12
Scenario—Battle of Petane (Ambush)	13
Scenario— Pursuing fugitives during inland expedition	14
Possible Scenarios—What other scenarios could be created?	15
Miniatures 28mm New Zealand Wars Ranges Available	16

The New Zealand Wars—War in the East 1866

PLEASE NOTE—YOU NEED THE FOLLOWING RULES

This Scenario Book you will need a copy of the New Zealand Wars Rules that are in the very first book in this series; “*The New Zealand Wars - Skirmish and Campaign Rules for the Waikato War 1863-1864.*” It has the rules in it for you to be able to play these scenarios.



Timeline of the (Hawkes Bay) War in the East - 1866

Date;	Details
1 st September, 1866	Ngati-Hineru at Te Pohue are joined by refugees from the fighting in Waiora during April & May 1866. who had converted to the Pai Marire religion.
7 th September, 1866	Group of 80 men led by War Priest Panapa, advance to Petane.
24 th September, 1866	Rumors of possible Hauhau attacked on Barracks and armory possible in Napier Town.
1 st -5 th October, 1866	Panapa moves his forces to Omarunui and takes possession of the pa there with 100 men now with reinforcements from Ngāti – Tuwharetoa 20 men.
5 th October, 1866	Superintendent of the Hawkes Bay Provenge, Donald McLean, returned from Wellington and meets with the local Ngati-Kahunugunu chiefs for their support against the Hauhau's.
8 th October, 1866	McLean starts gathering his forces. On 8 October, the Napier Militia and Volunteers under Colonel Whitmore were called out, and a force of military settlers and kawanatanga Maori (the former led by Major Fraser, the latter by Ihaka Whaanga and Kopu Parapara) was brought down from Waiora.
9 th October, 1866	Ngati-Kahunugunu chiefs meet gather at Pa Wahakairo.
10 th – 11 th October, 1866	Te Rangihoria and 25 mounted men, leave Te Pohue and advance towards Petane.
11 th October, 1866	Major Fraser arrives with his force from Waiora, with 40 Hawkes Bay Military Settlers and 30 Waiora Maori and then are ordered to guard the Petane Road.
	At Midnight, Colonel Whitmore and his forces of 200 militia and volunteers leave for Omarunui.
12 th October, 1866	Whitmore's Force of 200 Hawkes Bay Militia, Volunteers, and 200 Kupapa Maori attack and the Battle of Omarunui begin.
	Major Fraser and his force ambush Te Rangihoria and his mounted force of 25 men at Battle of Petane .
15 th – 20 th October, 1866	Colonel Whitmore's begins an expedition inland and advances through Te Pohue and plunders, burns and destroys kainga at Te Haroto, Waiparati, and Tarawera, to push the Hauhau's out of the Hawkes Bay.

The Situation

Donald McLean, the Hawkes Bay Superintendent of the Province, became aware of the risk to Hawkes Bay with the Pai Marire faith slowly making inroads with local Maori.

The Pai Marire prophet Panapa led a group of around 120 warriors, made up mainly of Ngati-Hineuru iwi, to Omarunui on the 5th October 1866.

By the 8th October the intentions of the Hauhau force and information about another moving towards Petane under Te Rangihoria, was considered to be a risk to the Napier settlement.

So McLean, instructed Lt-Colonel George Whitmore to call out the Militia and Volunteers for service. McLean then met with the local chiefs of Ngati-Kahunugunu iwi, to get their support and to serve as Kupapa. He also ordered Major James Fraser to bring his 40 Hawkes Bay Military Settlers and 30 Waiora Maori Kupapa under Pitera Kopu south from Waiora to help.

This gave Lt-Colonel George Whitmore, a force of roughly 480 men made up of 250 Europeans and 230 Maori Kupapa.

On the 10th October, news came in that Te Rangihoria and 25 mounted men, had left Te Pohue and was moving towards Petane from the north.

Whitmore decided to divide his force to meet both threats, so he sent Major James Fraser and the 40 men Hawkes Bay Military Settlers to Petane where they were reinforced by Captain Carr and his Petane Militia.

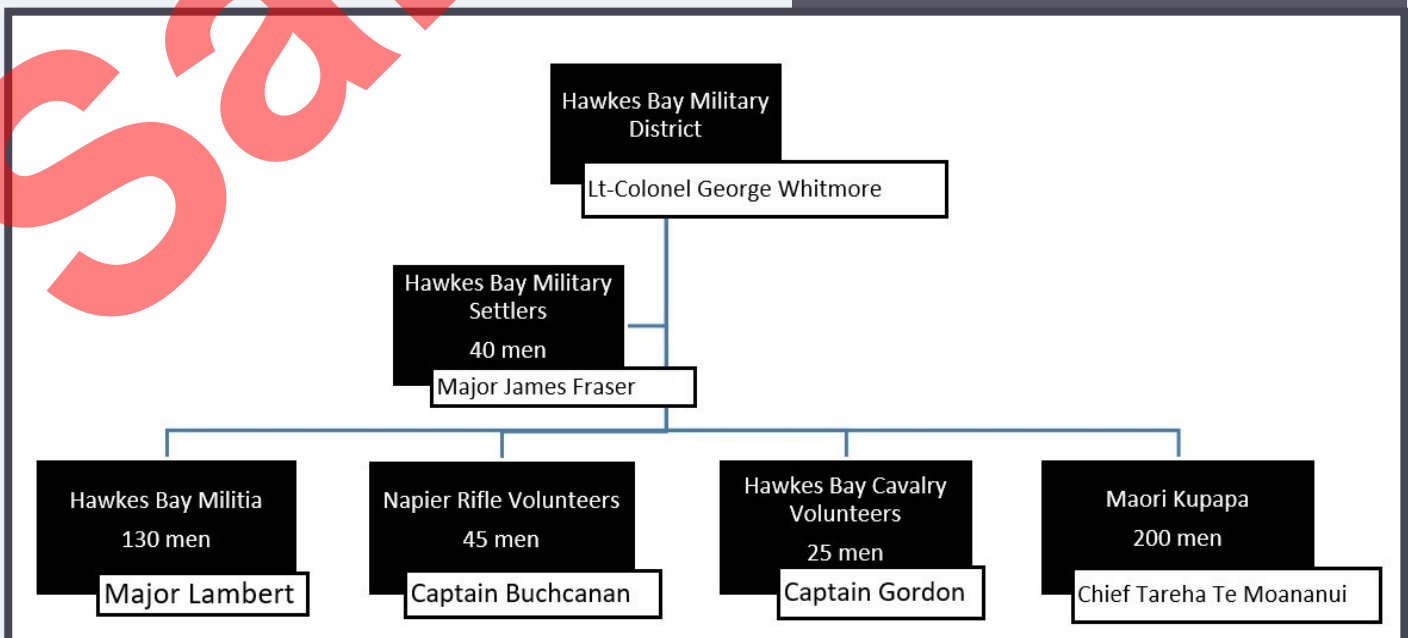
Then he (Whitmore) headed towards Omarunui with the rest of his force to face the Hauhau and Panapa.



COMMADER

LT-COLONEL GEORGE WHITMORE

Was a former soldier who had seen action around the world and was part of General Cameron's HQ Staff during the Waikato War. He was the most experienced soldier in New Zealand at the time and lived in the Hawkes Bay Province at Te Pohue.



Battle of Omarunui – (12th October, 1866)

Order of battle;

Hawkes Bay Military Forces;

Lt-Colonel George Whitmore

Major Lambert

Hawkes Bay Militia – 130 men

Captain Fitzgerald—No1 company

Captain Kennedy—No2 company

Captain Rhodes—No3 company

Captain Birch— No4 company

Captain Buchanan - Napier Rifle Volunteers - 45 men

Captain Gordon - Hawkes Bay Cavalry Volunteers – 25 men

Maori Kupapa—Chiefs Kaiwhata, Tareha, and Rēnata Kawepō

Maori Kupapa; Ngāti Kahungunu - 200 men

Hauhau Forces;

Panapa (War-Priest)

Chiefs Nikora, Kipa, Kingita and Petera Kahuroa

Ngāti Hineuru – 100 men

Chief Te Rangitahau,

Ngāti Tuwharetoa – 20 men

The Battle

On the 11th October at about midnight, Whitmore marched his command out of Napier Town towards Omarunui. Once they reached the area of the pa, next to the Tutaekuri River, a demand of surrender was sent by Lt-Colonel Whitmore to the Panapa and the Hauhau in the pa.

With no surrender, Donald McLean and Lt-Colonel George Whitmore decided there was no point of return so the order was given. The white flag came down from the flag pole and the Union Jack replaced it to signal the beginning of the attack on the pa.

The positions of the Hawkes Bay Forces was No 1 and No 2 companies of Militia under Major Lambert were the main attacking force with No 4 company under Captain Birch, in reserve at the river.

The Maori Allies were placed to the left of the attacking force and were ordered to come down and support the left flank of the attack.

The Napier Rifles Volunteers (Captain Buchanan) and No 3 company of Militia (Captain Rhodes), were placed on the right and supporting the attack of the main attacking force.

The Hawkes Bay Cavalry Volunteers (Captain Gordon), were held in reserve to cut off any Hauhau that tried to escape from the Omarunui Pa.

Once the attack started the Hauhau assaulted the Maori Allies and then fell back. Because of fire from the main attacking force. This forced the Maori Allies to divert and take shelter at the river bank just below the pa with the main attacking force. The fire from the pa forced the main attacking force to stop in its tracks, so at this point the reserve was sent in under Captain Birch which was repulsed and had to retire.

With this, the fire was kept up on the pa, Captain Kennedy was hit and had to be replaced in command of the No 2 company by Lt Wilson.

To the right, the Napier Rifle Volunteers under Captain Buchanan, started to make progress and moved into the pa. This resulted in the Hauhau forces starting to fall back. With this happening, Lt-Colonel George Whitmore ordered Major Lambert to renew his assault from the river and this time it pushed Panapa's forces into last main area of the pa. The order to ceasefire was given and a white flag appeared from within the pa.

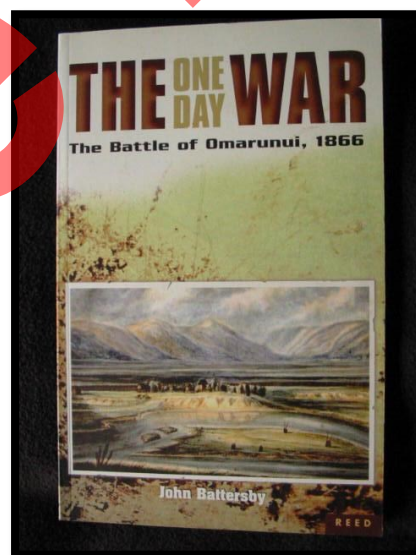
But one group of the Hauhau's were not keen to give up and they made a run for it out of the north-western edge of the pa towards the hills. Captain Rhodes, No 3 company had moved up in support of the Napier Rifle Volunteers and saw this group make a break for it and started to engage the Hauhau's trying to escape. Whitmore then sent the Hawkes Bay Cavalry Volunteers under Captain Gordon to chase them.

Inside the pa, it was a scene of war, the dead, dying and wounded lying on the ground, moaning and crying for help. Amongst the dead was Panapa's body, he had paid the ultimate price after ignoring McLean's letters asking him to explain his actions and warning him not to come near Napier Town. Next to his body was found the letter, McLean had sent asking them to surrender, which was crumpled up into a ball which explained the response of the Hauhau's at Omarunui.

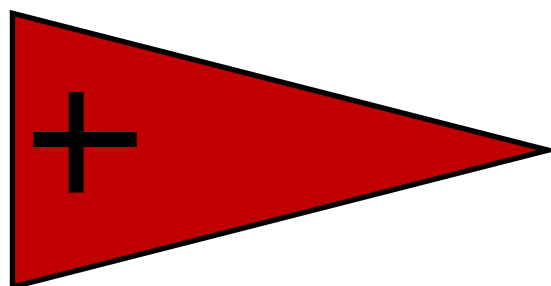
Colonial Losses; 2 killed, 14 wounded
Maori Losses; 31 killed, 28 wounded, 44 prisoners



Omarunui Pa, 1866



The One Day War
The Battle of Omarunui, 1866
By John Battersby
Great resource about the conflict



Hauhau Flag captured at Omarunui, 12th October, 1866

The Battle of Petane—12th October, 1866

Order of Battle;

Hawkes Bay Military Forces;

Major James Fraser

Lt St George

Hawkes Bay Military Settlers (40 men)

Captain Carr

Petane Settlers / Militia (6 men)

Total; 46 men



Hauhau Forces;

Te Rangihiroa

Pāora Toki and Anaru Matete

Ngāti Hineuru

Ngati Matepu

Total; 25 men (mounted)

(Picture) Hawkes Bay Military Settlers.

The Battle

On the, 12th October early in the morning, Major Fraser arrive near Petane in the Waiohinganga Valley. He had been sent there because of the possibility of an attack on Napier from the north.

Lt-Colonel George Whitmore had dispatched Major James Fraser and his 40 man Hawke's Bay Military Settlers to Pētane at 2 a.m. Captain Oswald Carr reinforced them with some armed settlers (Petane Militia).

A party of 25 Ngāti Hineuru and Ngati-Matepu warriors on horseback, led by Te Rangihiroa and Pāora Toki were heading towards Petane advancing down the Waiohinganga Valley, with the intent of attacking Napier Town from the north to support the attack from Panapa at Omarunui.

In mid-morning movement was seen 800 metres up the valley. An ambush was hastily prepared around a clearing just below a small gorge. The Hauhau party taken by complete surprise and in the firing that followed an initial call for surrender which was ignored, this resulted in a firefight that ended up with 12 warriors (including Te Rangihiroa) were killed and one wounded. The only colonial casualty was Sergeant James Fletcher, who was wounded in the knee. Three Ngāti Hineuru were taken prisoner.

These prisoners at Pētane, were later exiled to the Chatham Islands alongside prisoners taken at Ōmarunui. Among the Ngāti Hineuru who escaped from Pētane were Pāora Toki and Ānaru Mātete, who joined Te Kooti in 1868, and fought with him during the guerrilla campaign that followed (1868–72).

Colonial Losses; 1 wounded

Maori Losses; 12 Killed, 1 wounded, 3 prisoners