

Warships of the Kriegsmarine Germany

1939-1945

Auxiliary minesweepers (Sperrbrechers)

of the

Kriegsmarine Germany

1939 – 1945

An Illustrated Data Guide to Warships Germany

Warship International Series

Remembering the horrors of the mined blockade of Germany in the First World War, the leadership of the German fleet on the eve of the new world war began to develop a plan for the conversion of mercantile transport vessels into auxiliary minesweepers (sperrbrecher). Preference was given to a diesel-powered ships. During the conversion, it was planned to strengthen the ship's hull, increase unsinkability, install weapons, and equip it with the necessary equipment to destroy all types of sea mines using the "self-blasting" method.

In this reference book, the reader will get acquainted with the auxiliary minesweepers of the German fleet of the Second World War. A brief technical description, combat career, fate and illustrations are given for each ship. The reference data on 112 ships, more than 140 black-and-white photographs of ships from the author's personal archive are posted.

This book gives a complete picture of the auxiliary minesweepers of the German fleet, it will be interesting for both experts and amateurs of military history and will take its rightful place in the collection of books on naval history.

Russia, 2019
A.N.Batalov

Copyright © 2019 A.N.Batalov
All rights reserved.
ISBN: 9781699016053

CONTENTS

| | |
|---|---------|
| Introduction..... | 4 |
| Auxiliary minesweepers (Sperrbrecher) I – XII..... | 7 - 14 |
| Auxiliary minesweepers (Sperrbrecher) No1 – No194..... | 8 - 67 |
| Auxiliary minesweepers (Sperrbrecher) without a number..... | 67 - 68 |
| Classification of sea mines..... | 69 |
| Bibliography..... | 70 |

INTRODUCTION

The concept of mine safety in wartime for the Kriegsmarine Germany and the supply of imported materials to the military industry by sea was formulated at the beginning of the 20th century. In 1903, on the initiative of Vice Admiral Tirpitz, a commission was organized to combat the mine blockade of the German coast. The Commission developed recommendations for the conversion of merchant ships into Auxiliary minesweepers (Sperrbrechers). In addition to the tasks of protecting their own water area, these ships, according to the commission, should have been able to act together with the fleet in offensive operations. Auxiliary minesweepers (Sperrbrechers) were supposed to "pave the way" for linear squadrons to the enemy coast.

German Auxiliary minesweepers (Sperrbrecher) - unique mine action ships that had no analogues in other fleets of the world. They were mobilized cargo vessels with capacities from 387 to 8551 GBT, increased survivability and unsinkability, and were intended for making passages in minefields using the "self-blasting" method. Auxiliary minesweepers blasted contact mines with their hulls, and non-contact mines with the help of magnetic, acoustic, and other fields.



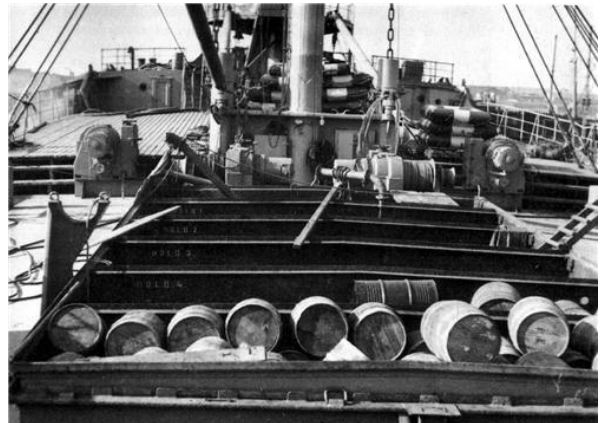
Electromagnet winding

A trawling field was created at a distance of 40-60 m from the sides, 70-80 m in the nose. Outside the sides, these turns were sheathed for safety by thick boards, and along the waterline they were additionally protected by steel sheets. Bales of steel sheets were laid in the hold. A membrane-type acoustic trawl with an easily replaceable emitter - GBT (Geräuschboje mit Turbinenantrieb), KKG (Knallkörpergerät), DKG (Dampfknetgerät) was built into the hull near the last hold.

Upon conversion, measures were taken to increase survivability. The first, second and third holds were filled with wood or empty hermetic fuel barrels, the gaps between them were sealed cans. All mechanisms were mounted on shock absorbers; in each hold there were powerful sump pumps with a capacity of at least 500 m³ / hour. To increase precipitation, cargo holds were loaded with metal (railway rails), river sand. Powerful anti-aircraft weapons were installed on the ships. Several ships were equipped with barrage balloons and FuMO 21 type radars. Residential and office premises were located in the aft part of the ships.

The German Auxiliary minesweepers (Sperrbrecher) were used to escort large warships and convoys, and also performed mine reconnaissance missions. Were the only anti-mines with hydrodynamic fuses. Their equipment included paravanes guards for the removal of anchor mines, an acoustic trawl with a membrane type emitter built into the hull in the aft, and a powerful electromagnet to create a strong magnetic field (VES-Anlage). The hull itself was used as the core. In the bow, it was entwined with coils of a rubberized cable, each coil was locked at both ends in a distribution box located on the cargo hatch of the first hold.

The winding was powered by a special electric device. A



Holds filled with empty barrels to increase the survivability of the ship

Armament:

The first ships were equipped with a limited set of artillery weapons, consisting of one 105 mm C/96 gun on the bow and two 20 mm C/30 anti-aircraft guns on the bridge. Later, the old 105 mm was replaced with more modern C/6 and C/32, anti-aircraft weapons were strengthened.

According to the state of 1943, the armament of a large breakthrough consisted of:

2 - 105 mm SK C/32 (600 shots)
3x2 - 37 mm SK/30 (12,000 shots)
3x4 - 20 mm Flak 38
2x1 - 20 mm Flak 38 (total 28,000 rounds)
4 - 7.92 mm MG/34 machine guns (20,000 rounds)
The average 1943 state breaker was arming himself:

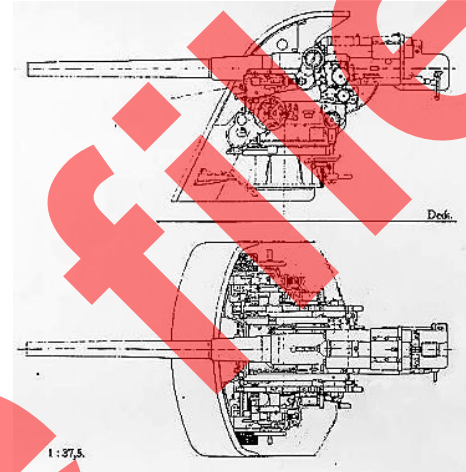
2 - 105 mm SK C/32 (600 shots)
2x1 - 37 mm SK/30 (4,000 shots)
7 - 20 mm Flak 38 (14,000 rounds)
3 - 7.92 mm machine gun

On smaller ships, 2 weapons options were provided:

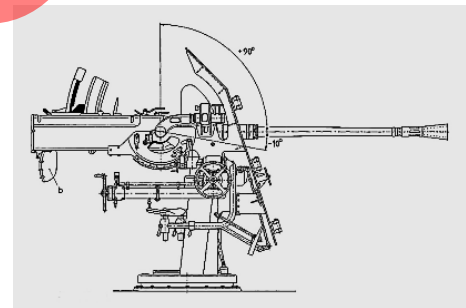
1 - 105 mm (300 shots)
1 - 37 mm semiautomatic device (2 000 shots)
8 - 20 mm machine gun (16 000 rounds)
2 - 7.92 mm machine guns
or
1...2 - 88 mm
2 - 37 mm
10 - 20 mm
2 - 7.92 mm machine guns

The actual composition, of course, differed from the regular, especially in terms of anti-aircraft weapons. However, the main caliber on some ships was represented by captured 75-mm French and Polish origin.

On some ships, air defense balloons (1-2), Flamethrowers (1) And rocket launchers (up to 8) Raketenabwurfgerät - RAG) were used as additional air defense equipment.



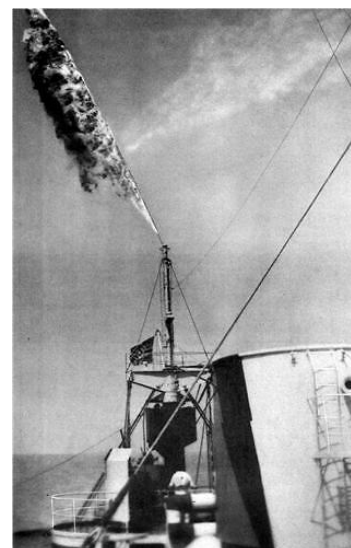
88 mm gun



37 mm SK/30 gun



Raketenabwurfgerät – RAG



Flamethrowers

The crew:

The crew on the first Auxiliary minesweepers (Sperrbrechers) in the staff of 85 people (including 3 officers), in fact 85-170 people.

Later on large Auxiliary minesweepers (Sperrbrechers): staff 234 people (8 officers), fact. 150-230 people (4-5 officers).

Secondary staff: 116 people (5 officers).

Small: staff 83 people (4 officers), fact. from 15 to 120 people

Auxiliary minesweeper Flotillas:

1 Auxiliary minesweepers Flotille. Created on Sept. 1939 as the 1st group of mine breakers (1 Auxiliary minesweepers Group). In July 1940 it was reorganized into a flotilla. Acted in the Baltic, since 1940 also in the German Bay. After the war (1946) was disbanded.

Commanders: Captain Richard von Stosh (9.1939-5.1941); Captain Schmidt-Prestin (5.1941-4.1942); Captain Baron Gustav von Liebenstein (5.1942-2.1943); Captain Frank (2.1943-5.1945).

2 Auxiliary minesweepers Flotille. It was created in the fall of 1939 as the 2nd, 4th and 6th groups of mine breakers, which on 7.1.1940 were combined into a flotilla. In 1940 she acted off the coast of the Netherlands, and then in the Brest region and on the Spanish border. On 7.1.1941, the 6th flotilla was created from a part of the flotilla. In sept. 1944 disbanded.

Commanders: Captain Lothar Köhler (7.1940-3.1941); Captain Rudolf Körner (3.1941-10.1942); Captain Drevin (10.1942-9. 1944).

3 Auxiliary minesweepers Flotille. Created 10.1.1940 by renaming the 1st patrol flotilla. Acted in the Western Baltic. After the war (1946) was disbanded.

Commanders: Captain Friedrich Körner (10.1940-12.1941); Captain von Schlieben (1.1942-2.1943); Captain Eichert (2.1943-4.1944); Captain Fontane (4.1944-5.1945).

4 Auxiliary minesweepers Flotille. It was created in June 1940 as a group of minebreakers "Netherlands". 09.25.1940 renamed the flotilla. In November 1941, the 5th flotilla was created from part of the flotilla. In July 1943 it was disbanded.

Commanders: Captain Doctor of Medicine Wilšek (6.1940-10.1941); Captain Karl Palmgreen (10.1941-3.1943).

5 Auxiliary minesweepers Flotille. Created in November 1941 from part of the 4th Flotilla. Acted in the North Sea and off the Dutch coast. 12.1941 renamed the 8th flotilla.

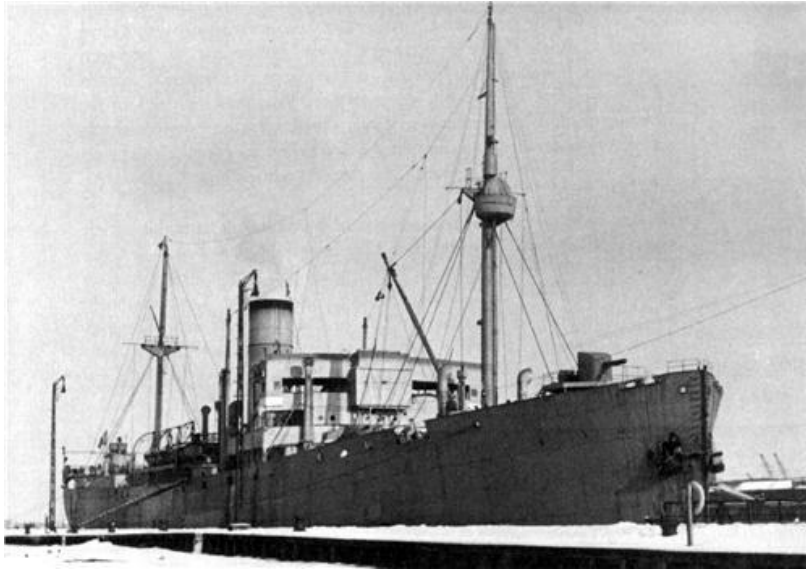
Commander: Captain Fels (11.1941-12.1941).

6 Auxiliary minesweepers Flotille. Created 7.1941 from part of the 2nd flotilla. The base of the flotilla was Nantes, later Conkarno. Disbanded in Sept. 1944.

Commanders: Captain Waldemar Petri (7.1941-1.1943); Captain Notholt (1.1943-9.1944).

8 Auxiliary minesweepers Flotille. Created 12.1941 by renaming the 5th flotilla. Acted on the North Sea and off the coast of the Netherlands. Disbanded in May 1945. Auxiliary minesweeper I

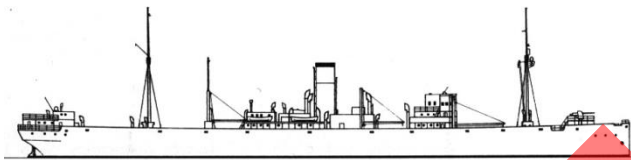
Commanders: Captain Fels (12.1941-2.1943); Captain Gardts (2.1943-4.1944); Captain Mikhtash (4.1944-5.1945).



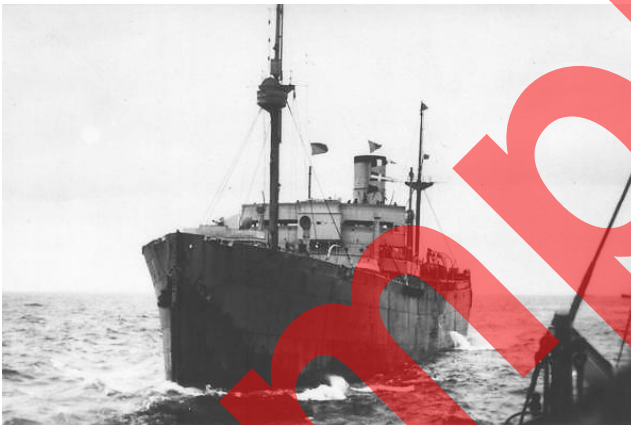
**(Sperrbrecher I)
ex-S/S Bahia Camarones**

Builder: Palmers Shipbuilding CO.
Gross tonnage: 8,551
Dimensions, m: 136.58 x 17.43 x 8.52
Speed, knots: 11.0
Armament: 1 x 1 - 105/42mm
 2 - 20mm
The crew: 85 (wartime)

Auxiliary minesweeper I, 1940

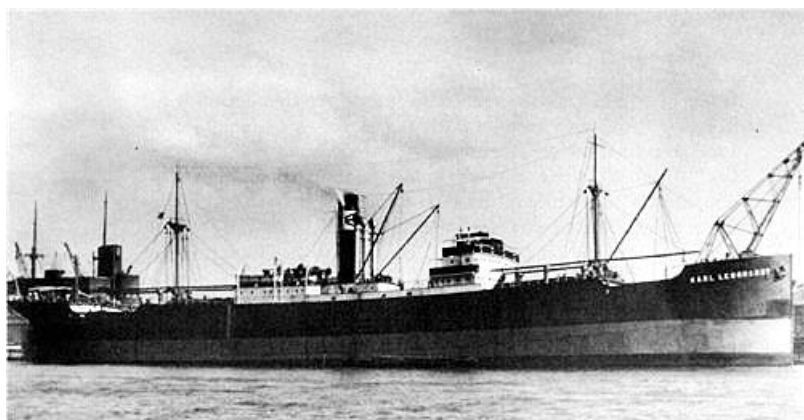


Drawing Auxiliary minesweeper I (Sperrbrecher I)



Auxiliary minesweeper I, 1939

Owner: Hamburg – Sudamerikanische Dampfschiff, Hamburg
Laid Down brit. as S/S *Gothie Prince* 1918
Completed as merchant brit. vessel S/S *Gothie Prince* 8.1918
Service: Civilian: Hamburg – Sudamerikanische Dampfschiff
 3.15.1927 – 9.1938 german S/S *Sonnenfels*
 9.1938 – 10.2.1939 german S/S *Bahia Camarones*
Requisitioned by Kriegsmarine 10.2.1939
Registered as a Auxiliary minesweeper I 10.2.1939
Mine destruction Group 10.2.1939 – 7.1940
Returned owner 7.1940
Fate: 1.11.1945 in 23:45 heavily damaged by the fire of the
English ships – cruisers *Norfolk* and *Bellona*, destroyers
Onslow, *Orwell* and *Onslaught*. 1.12.1945 sank in shallow
water.



Auxiliary minesweeper II (Sperrbrecher II) ex- S/S Karl Leonhardt

Builder: Craig, Taylor & CO.,
Stockton.
Gross tonnage: 6,042
Dimensions, m: 126.30 x 16.90 x 7.50
Speed, knots: 10.0
Armament: 1 x 1 - 105/42mm
2 - 20mm
The crew: 85 (wartime)
S/S Karl Leonhardt, 1939

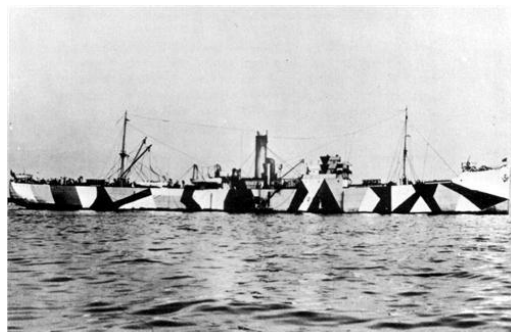
Owner: Leonhardt & Blumberg, Hamburg
Laid Down brit. as *S/S Clarissa Radeliffe* 1912
Completed as cargo ship 4.1913
Service:
Civilian: 4.1913 – 1917 brit. as *S/S Clarissa Radeliffe*
1917 – 1935 greek *S/S Marieta*
1935 – 1939 german *S/S Karl Leonhardt*
Requisitioned by Kriegsmarine 10.2.1939
Registered as a Auxiliary minesweeper II 10.2.1939
Mine destruction Group 10.2.1939 – 2.1940
Returned owner 2.1940
Fate: 3.16.1946 flooded by the allies in the Skagerrak strait
with poisonous gases.



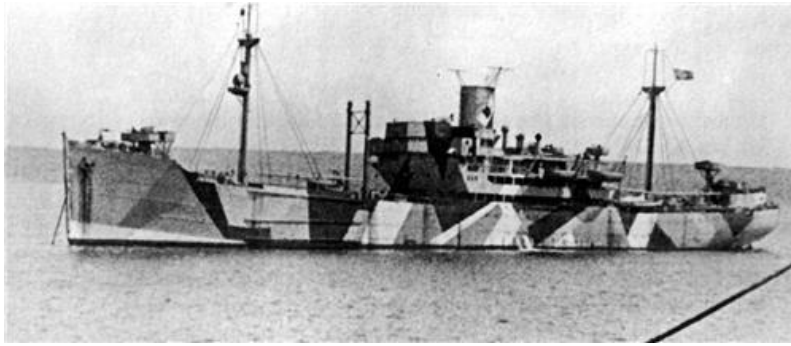
Auxiliary minesweeper III (Sperrbrecher III) ex- S/S Robert Bornhofen

Builder: W. Doxford & Sons, Sunderland
Gross tonnage: 6,643
Dimensions, m: 125.60 x 16.90 x 7.80
Speed, knots: 11.0
Armament: 1 x 1 - 105/42mm
2 - 20mm
The crew: 85 (wartime)

Owner: Leonhardt & Blumberg, Hamburg
Laid Down brit. as *S/S War Beryl* 1917
Completed as cargo ship 12.7.1918
Service: Civilian: brit. *S/S Borhwell* 1920 – 1933
brit. *S/S Tower Crown* 1933 – 1937
greek *S/S Mount Ossa* 1937 – 1939
german *S/S Robert Bornhofen* 1939
Requisitioned by Kriegsmarine 10.2.1939
Registered as a Auxiliary minesweeper III 10.2.1939
Mine destruction Group 10.2.1939 – 2.1940
Returned to owner 2.1940
Requisitioned by Kriegsmarine as a target ship 1941
Fate: Mined off North Cape 9.12.1942



Target ship *Robert Bornhofen*, 1942



**Auxiliary minesweeper IV
(Sperrbrecher IV)
ex- S/S Oakland**

Builder: Deutsche Werft, Hbg.-
Finkenwarder

Gross tonnage: 6,757

Dimensions, m: 137.54 x 18.03 x 7.88

Speed, knots: 13.0

Armament: 1939: + 2 x 1 - 105/42mm

2 x 37mm

3 x 20mm

The crew: 90 (wartime)

Owner: Hamburg – Amerika – Linie, Hamburg

Laid Down 1928

Completed as cargo ship 10.10.1929

Service:

Civilian: 10.10.1929 – 1939 *S/S Oakland*

Requisitioned by Kriegsmarine 9.30.1939

Registered as a Auxiliary minesweeper IV 9.30.1939

Mine destruction Group 4 9.30.1939 – 2.1940

Auxiliary minesweeper *No4* 7.1.1940

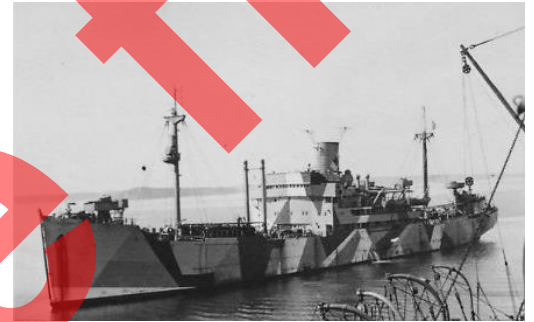
Auxiliary minesweeper Flotilla 2 7.1.1940 – 7.1.1941

Auxiliary minesweeper Flotilla 6 7.1.1941 – 8.16.1944

Hospital Ships 8.16.1944 – 8.27.1944

Fate: Sunk 8.27.1944 by british aircraft in the harbor at Brest.
1947 raised and restored.

Civilian: 1950 – 1963 fran *S/S Alain I.D.*; 1963 – 1969
panam *S/S Lycurgos*; 1969 scrapped in the Kaohsinng.



Auxiliary minesweeper No4, 1941



**Auxiliary minesweeper V
(Sperrbrecher V)
ex- S/S Schwanheim**

Builder: Bremer Vulkan, Bremen.

Gross tonnage: 5,339

Dimensions, m: 137.70 x 16.90 x 7.7

Speed, knots: 13.0

Armament: 2 x 1 - 105/42mm

2 x 37mm

12 x 20mm

Owner: Unterweser Reederei AG, Bremen

Completed as cargo ship 1935

Service:

Civilian: UR AG, Bremen 1.1936 – 10.4.1939

Requisitioned by Kriegsmarine 10.4.1939

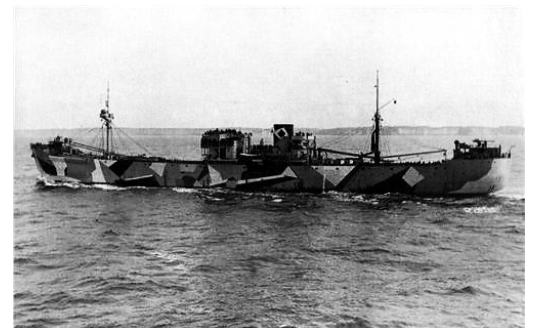
Registered as a Auxiliary minesweeper V 10.4.1939

Mine destruction Group 10.4.1939 – 7.1.1940

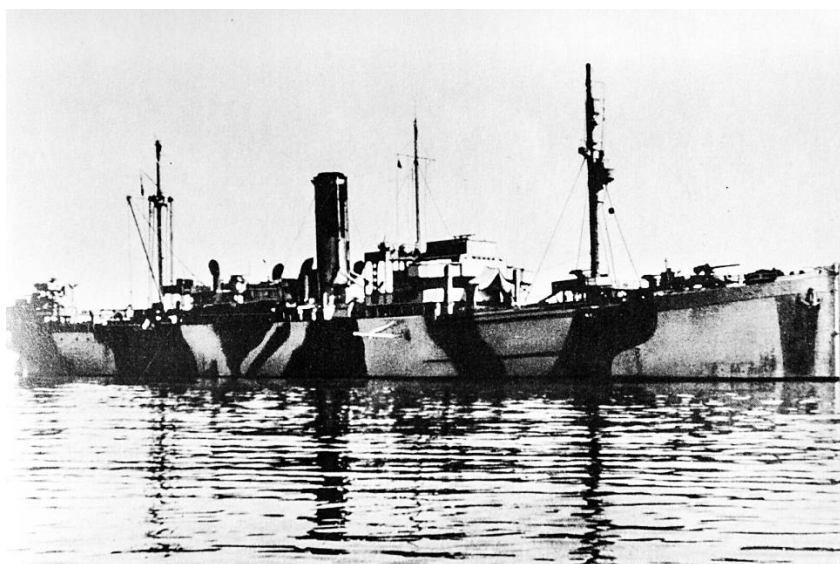
Auxiliary minesweeper *No5* 7.1.1940

Auxiliary minesweeper Flotilla 2 7.1.1940 – 8.14.1944

Fate: Burnt-out Royan 8.14.1944 after bombed Allied aircraft.

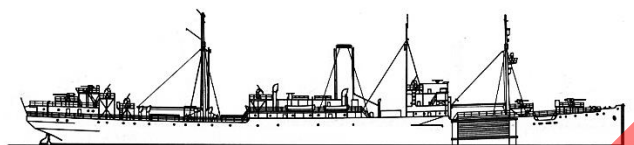


Auxiliary minesweeper No5, 1944



Auxiliary minesweeper VI (Sperrbrecher VI) ex- S/S Magdeburg

Builder: Blohm & Voss, Hamburg
Gross tonnage: 6,128
Dimensions, m: 136.50 x 17.70 x 7.8
Speed, knots: 13.0
Armament: 2 x 1 - 105/42mm
4 x 37mm
10 x 20mm
The crew: 85 – 170 (wartime)



Drawing Auxiliary minesweeper No6, 1944



Auxiliary minesweeper No6 , 8.14.1944



S/S Magdeburg prewar

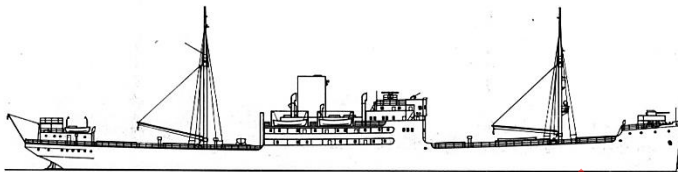
Owner: Hamburg – Amerika – Linie, Hamburg
Completed as cargo ship 12.8.1925
Service:
Civilian: Hamburg – Amerika – Linie, Hamburg
12.8.1925 – 10.4.1939
Requisitioned by Kriegsmarine 10.4.1939
Registered as a Auxiliary minesweeper VI 10.4.1939
4 Mine destruction Group 10.4.1939 – 2.1940
Auxiliary minesweeper No6 7.1.1940
2 Auxiliary minesweeper Flotilla 7.1.1940 – 7.1. 1941
6 Auxiliary minesweeper Flotilla 7.1.1941 – 8.14.1944
Fate: Burnt-out Royan 8.14.1944 after bombed Allied aircraft.



Auxiliary minesweeper VII (Sperrbrecher VII) ex- S/S Sauerland

Builder: Schichau, Danzig
Gross tonnage: 7,087
Dimensions, m: 148.20 x 18.60 x 7.9
Speed, knots: 12.0
Armament:
2 x 1 - 105/42mm
2 x 37mm
12 x 20mm
The crew: 85 – ... (wartime)

Auxiliary minesweeper VII, 1940



Drawing Auxiliary minesweeper No7, 1939



Auxiliary minesweeper No7, 12.8.1944

Owner: Hamburg – Amerika – Linie, Hamburg
Completed as cargo ship 3.9.1929
Service:
Civilian: Hamburg – Amerika – Linie, Hamburg
3.9.1929 – 10.3.1939
Requisitioned by Kriegsmarine 10.3.1939
Registered as a Auxiliary minesweeper VII 10.3.1939
6 Mine destruction Group 10.3.1939 – 2.1940
Auxiliary minesweeper No7 7.1.1940
2 Auxiliary minesweeper Flotilla 7.1.1940 – 7.1.1941
6 Auxiliary minesweeper Flotilla 7.1.1941 – 8.14.1944
Fate: Heavily damaged by British aviation and torpedoed RN
cruiser *Diadem* off La Pallice 8.12.1944.

Auxiliary minesweeper VIII (Sperrbrecher VIII) ex- S/S Neckar

Builder: Deschimag, Bremen
Gross tonnage: 8,417
Dimensions, m: 162.30 x 19.40 x 8.6
Speed, knots: 14.0
Armament: 2 x 1 - 105/42mm
4 x 37mm
8 x 20mm
The crew: 86 – ... (wartime)

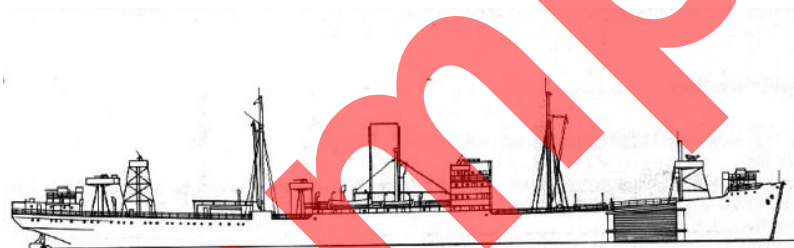


Auxiliary minesweeper VIII (1939)

Owner: Norddeutscher Lloyd, Bremen
Completed as cargo ship 12.1927
Service:
Civilian: Norddeutscher Lloyd, Bremen 3.9.1929 – 0.3.1939
Requisitioned by Kriegsmarine 10.3.1939
Registered as a Auxiliary minesweeper VIII 10.3.1939
6 Mine destruction Group 10.3.1939 – 2.1940
Auxiliary minesweeper No8 7.1.1940
2 Auxiliary minesweeper Flotilla 7.1.1940 – 7.1.1941
6 Auxiliary minesweeper Flotilla 7.1.1941 – 8.28.1944
Fate: Abandoned Brest 28.8.1944 after bombed Allied aircraft.



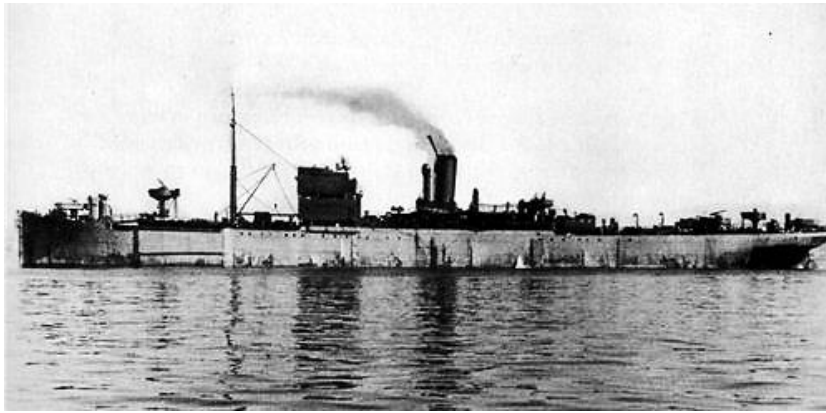
Auxiliary minesweeper No8, 1943



Drawing Auxiliary minesweeper No8,1943



Auxiliary minesweeper No8, 1943



Owner: Hamburg – Amerika – Linie, Hamburg
 Completed as brit. *S/S Frienberg* 11.4.1914
 Service:
 Civilian: brit. *S/S City of Sydney* 1921 - 1923
 german *S/S Luneburg* 1923
 Hamburg – Amerika – Linie, Hamburg 1923 – 10.3.1939
 Requisitioned by Kriegsmarine 10.3.1939
 Registered as a Auxiliary minesweeper IX 10.3.1939
 6 Mine destruction Group 10.3.1939 – 7.1.1940
 Auxiliary minesweeper No9 7.1.1940
 2 Auxiliary minesweeper Flotilla 7.1.1940 – 7.1.1941
 6 Auxiliary minesweeper Flotilla 7.1.1941 – 7.1.1944
 Fate: Scuttled La Pallice 7.1.1944, salved 1948 and scrapped.

Auxiliary minesweeper IX (Sperrbrecher IX) ex- S/S Luneburg

Builder: Tecklenborg, Geestemünde
 Gross tonnage: 5,828
 Dimensions, m: 137.50 x 17.40 x 8.2
 Speed, knots: 13.0
 Armament:
 2 x 1 - 105/42mm
 4 x 37mm, 8 x 20mm
 The crew: 85 – ... (wartime)



Drawing Auxiliary minesweeper No9



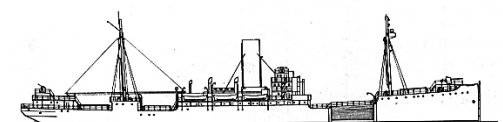
Auxiliary minesweeper No9, 1943



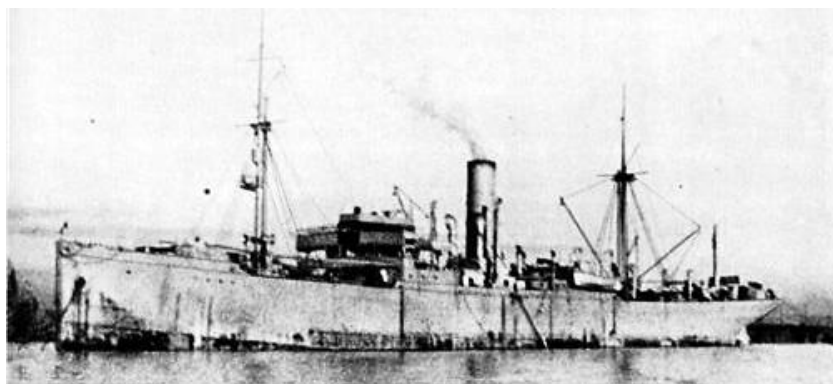
Owner: Hamburg – Sudamerikanische Dampfschiff, Hamburg
 Completed as cargo ship 4.29.1922
 Service:
 Civilian: Hamburg – Sudamerikanische Dampfschiff, Hamburg
 4.29.1922 – 9.28.1939
 Requisitioned by Kriegsmarine 9.28.1939
 Registered as a Auxiliary minesweeper X 9.28.1939
 1 Mine destruction Group 10.3.1939 – 2.1.1940
 Auxiliary minesweeper No10 7.1.1940
 1 Auxiliary minesweeper Flotilla 7.1.1940 – 3.6.1944
 Fate: Aux. mines. No10 was mined 3.7.1944 off Norderney.

Auxiliary minesweeper X (Sperrbrecher X) ex- S/S Vigo

Builder: Howaldtwerke, Kiel
 Gross tonnage: 7,358
 Dimensions, m: 126.0 x 18.30 x 8.30
 Speed, knots: 12.0
 Armament:
 2 x 1 - 105/42mm
 4 x 37mm
 5 x 20mm
 1 balloon
 The crew: 85 – ... (wartime)



Drawing Auxiliary minesweeper No10



Auxiliary minesweeper XI (Sperrbrecher XI) ex- S/S Petropolis

Builder: Bremer Vulkan, Bremen.
Gross tonnage: 4,845
Dimensions, m: 127.40 x 16.35 x 8.4
Speed, knots: 12.0
Armament: 1 x 105/42mm
2 x 20mm
The crew: 85 – ... (wartime)

Owner: Hamburg – Sudamerikanische Dampfschiff, Hamburg
Completed as brit. *S/S Berengar* 4.13.1911

Service:

Civilian: brit. *S/S General Botha* 1923 - 1926
german *S/S Berengar* 1926 - 1938
german *S/S Petropolis* 1938

Hamburg – Sudamerikanische Dampfschiff, Hamburg
1938 – 9.28.1939

Requisitioned by Kriegsmarine 9.28.1939

Registered as a Auxiliary minesweeper XI 9.28.1939

1 Mine destruction Group 9.28.1939 – 7.1940

Fate: Returned to owner 8.4.1940; beached Juelssard (Elbe)
5.45 after bombed Allied aircraft 4.29.1945, scrapped 1948



S/S General Botha, 1923

Auxiliary minesweeper XII (Sperrbrecher XII) ex- S/S Stolzenfels

Builder: J.C. Tecklenborg,
Geestemunde

Gross tonnage: 7,512
Dimensions, m: 142.78 x 17.82 x 8.2
Speed, knots: 12.0
Armament: 1 x 105/42mm
2 x 20mm
The crew: 85 – ... (wartime)



Owner: DDG "Hansa", Bremen
Completed as brit. *S/S Altenfels* 11.1915

Service:

Civilian: brit. *S/S Eastern Prince* 1920 - 1926
german *S/S Stolzenfels*, DDG "Hansa", Bremen 1926 - 1938

Requisitioned by Kriegsmarine 9.28.1939

Registered as a Auxiliary minesweeper XII 9.28.1939

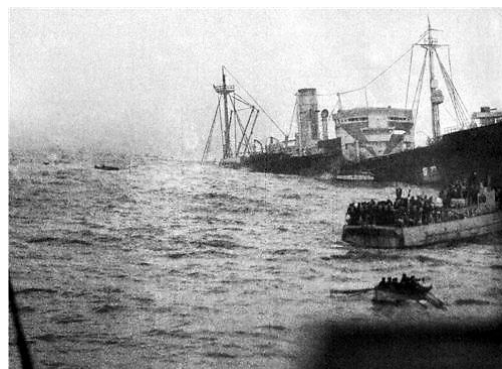
1 Mine destruction Group 9.28.1939 – 7.1940

Auxiliary minesweeper No12 7.1.1940

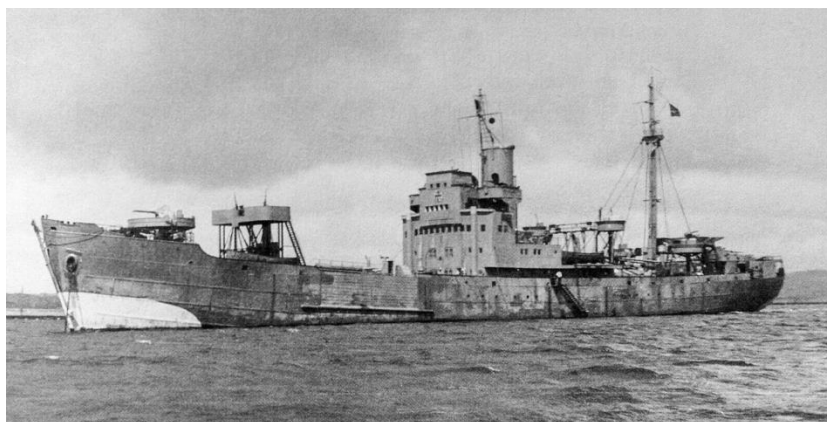
1 Auxiliary minesweeper Flotilla 7.1.1940 – 11.1.1940

3 Auxiliary minesweeper Flotilla 11.1.1940 – 3.20.1941

Fate: Auxiliary minesweeper No12 was sunk by British torpedo
bomber 3.20.1941 off Ameland.



Sinken Auxiliary minesweeper No12



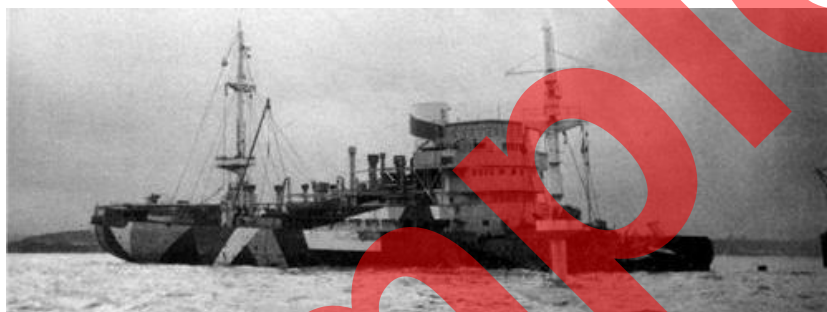
Auxiliary minesweeper 1 (Sperrbrecher 1) ex- M/S Saar

Builder: Deschimag, AG, Bremen
Gross tonnage: 3,261
Dimensions, m: 115.10 x 15.30 x 6.5
Speed, knots: 14.2
Armament: 2 x 105/42mm
6 x 37mm
12 x 20mm
The crew: 85 – ... (wartime)

Owner: Norddeutscher Lloyd, Bremen
Completed as cargo ship 11.13.1935
Service:
Civilian: Norddeutscher Lloyd, Bremen 11.13.35 - 9.17.1940
Requisitioned by Kriegsmarine 9.17.1940
Registered as a Auxiliary minesweeper *No1* 9.17.1940
2 Auxiliary minesweeper Flotilla 9.17.1940 – 7.1.1941
6 Auxiliary minesweeper Flotilla 7.1.1941 – 8.24.1944
Fate: Bombed Allied aircraft Brest 8.24.1944



Drawing Auxiliary minesweeper *No1*



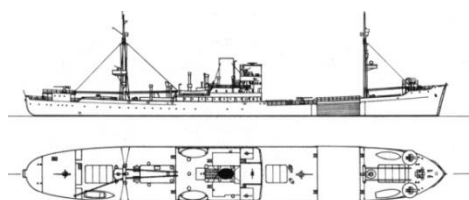
Auxiliary minesweeper 2 (Sperrbrecher 2) ex- M/S Athen

Builder: Deutsche Werft, Hamburg
Gross tonnage: 4,450
Dimensions, m: 129.50 x 16.90 x 7.2
Speed, knots: 14.5
Armament: 2 x 105/42mm
4 x 37mm
5 x 20mm
The crew: 40 – ... (wartime)



M/S Athen, 1936

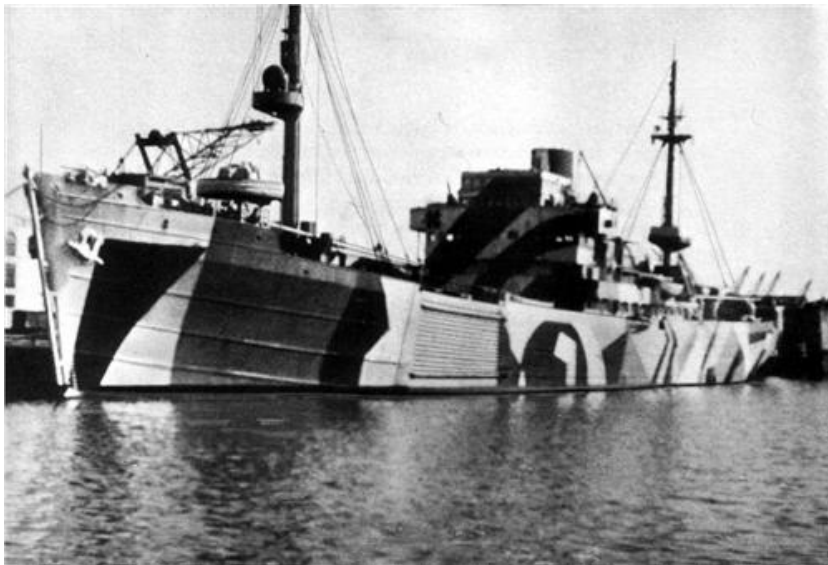
Owner: Deutsche Levante Linie, Hamburg
Completed as cargo ship 9.1.1936
Service:
Civilian: Deutsche Levante Linie, Hamburg 9.1.1936 - 9.8.1940
Requisitioned by Kriegsmarine 9.8.1940
Registered as a Auxiliary minesweeper *No2* 9.8.1940
2 Auxiliary minesweeper Flotilla 9.17.1940 – 7.1.1941
Returned to owner E1942
Fate: Mined Boulogne 9.22.1942, salvaged, USSR mercantile *General Brusilov* (1946), Poland *Warynski* (1947)



Drawing Auxiliary minesweeper *No2*



Poland Warynski, 1969



**Auxiliary minesweeper 3
(Sperrbrecher 3)
ex- M/S Belgrad**

Builder: Deutsche Werft, Hamburg
Gross tonnage: 4,418
Dimensions, m: 129.50 x 16.90 x 7.2
Speed, knots: 14.5
Armament: 2 x 105/42mm
 4 x 37mm
 5 x 20mm
The crew: 40 – ... (wartime)

Auxiliary minesweeper No3 in 1942

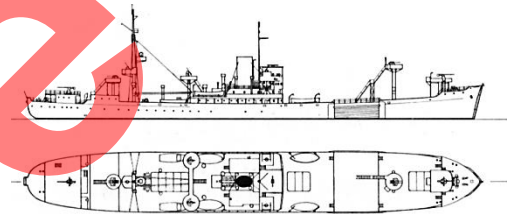


Auxiliary minesweeper No3 in 1940



Auxiliary minesweeper No3, 1944

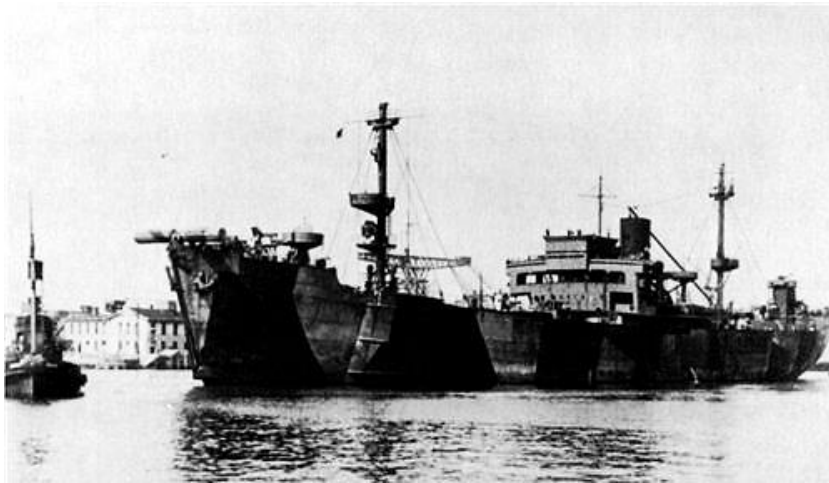
Owner: Deutsche Levante Linie, Hamburg.
Completed as cargo ship 5.25.1937
Service: Civilian: Deutsche Levante Linie, Hamburg.
5.25.1937 - 8.15.1940
Requisitioned by Kriegsmarine 8.15.1940
Registered as a Auxiliary minesweeper No3 (H3) 8.15.1940
2 Auxiliary minesweeper Flotilla 8.15.1940 – 4.25.1945
Heavily damaged by British mined 12.21.1942
Fate: Auxiliary minesweeper No3 was scuttled 8.26.1944 off
Bordeaux., salved 1948
Fran. mercantile *Nicole Schiaffino* (1950). 2.1973 scrapped in
Bilbao.



Drawing Auxiliary minesweeper No3, 1942



Auxiliary minesweeper No3 (H3), 1940

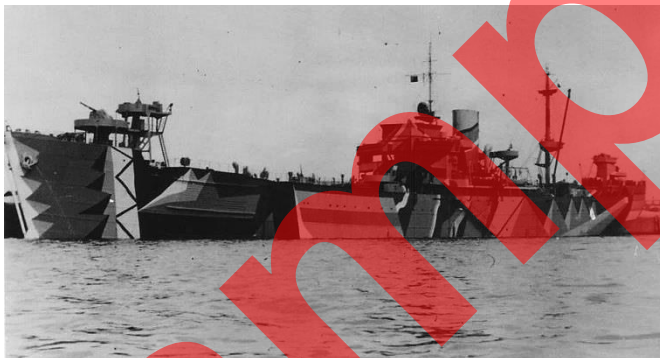


**(Sperrbrecher 11)
ex- M/S Belgrano**

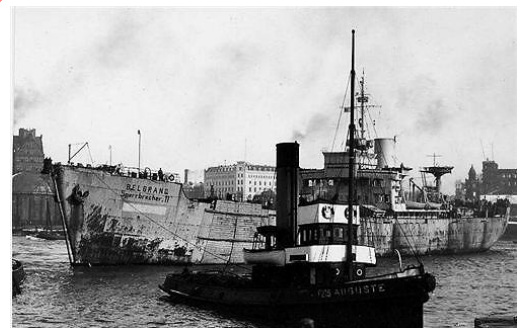
Builder: Howaldtwerke, Hamburg
Gross tonnage: 6,095
Dimensions, m: 144.90 x 18.6 x 7.30
Speed, knots: 13.0
Armament: 2 x 105/42mm
4 x 37mm
10 x 20mm
The crew: 35 – ... (wartime)



Auxiliary minesweeper No 11, 1941

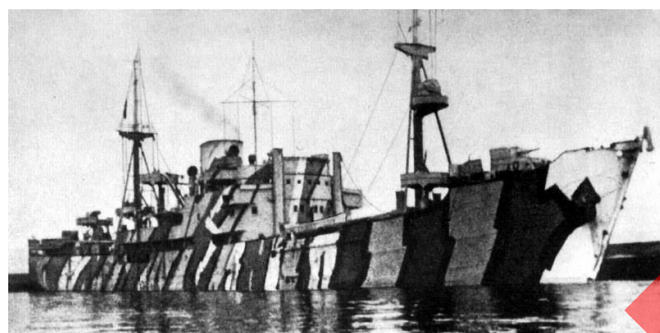
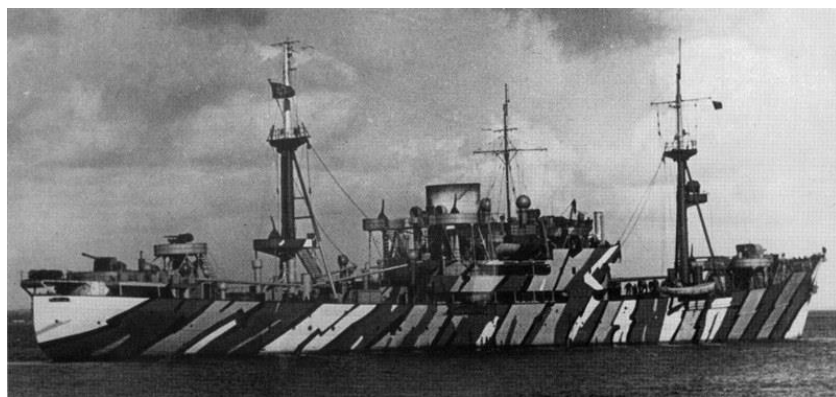


Auxiliary minesweeper No 11, 1943



German Auxiliary minesweeper, 1946

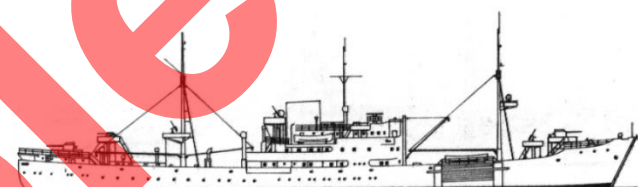
Owner: Hamburg – Sudamerikanische Dampfschiff, Hamburg.
Completed as cargo ship 10.1.1936
Service:
Civilian: Hamburg – Sudamerikanische Dampfschiff, Hamburg.
10.1.1936 – 8.1940
Requisitioned by Kriegsmarine 8.1940
Registered as a Auxiliary transport A6 8.1940
Registered as a Auxiliary minesweeper No 11 1.17.1941
1 Auxiliary minesweeper Flotilla 1.17.1941 – 1.4.1945
Mined of Ameland 10.23.1942
Repaired in Hamburg E1942
Fate: Mined Flensburg 1.4.1945, salved 1946. German Auxiliary
minesweeper 1946 – 1947. Scrapped 1947



Auxiliary minesweeper No13 ,1940



Auxiliary minesweeper No13, 1941



Drawing Auxiliary minesweeper No13, 1943

Auxiliary minesweeper 13 (Sperrbrecher 13) ex- M/S Minerva

Builder: Bremer Vulkan, Bremen.

Gross tonnage: 2,446

Dimensions, m: 109.9 x 14.60 x 5.90

Speed, knots: 15.0

Armament: 2 x 105/42mm

6 x 37mm

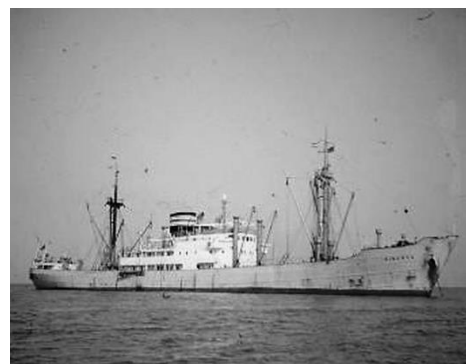
14 x 20mm

8 - 86 rocket launchers

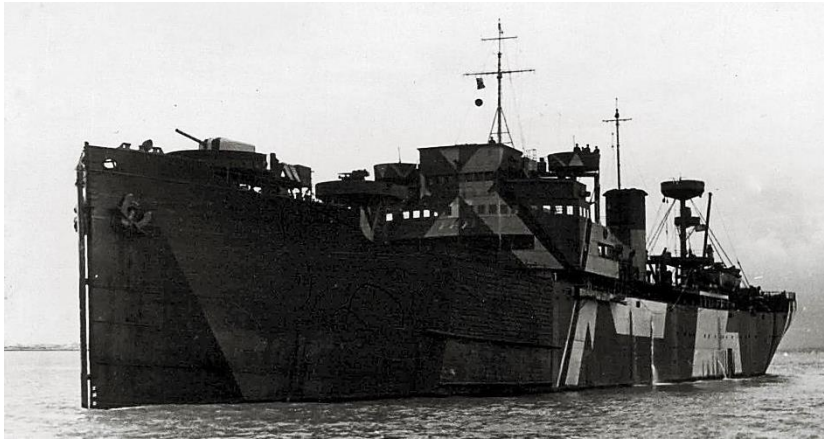
1 balloon

The crew: 30 - ... (wartime)

| | |
|--|-----------------------|
| Owner: | DSG "Neptun", Bremen. |
| Completed as cargo ship | 1.31.1939 |
| Service: | |
| Civilian: DSG "Neptun", Bremen | 1.31.1939 - 9.3.1940 |
| Requisitioned by Kriegsmarine | 9.3.1940 |
| Registered as a Auxiliary minesweeper No13 | 9.3.1940 |
| 1 Auxiliary minesweeper Flotilla | 9.3.1940 - 11.16.1940 |
| 3 Auxiliary minesweeper Flotilla | 11.16.1940 - 5.1945 |
| USA M/S Omgus | 4.29.1948 - 5.13.1948 |
| German M/S Minerva | 5.13.1948 - 12.1977 |
| Fate: Scrapped 12.1977 in Pakistan. | |



M/S Minerva, 1963



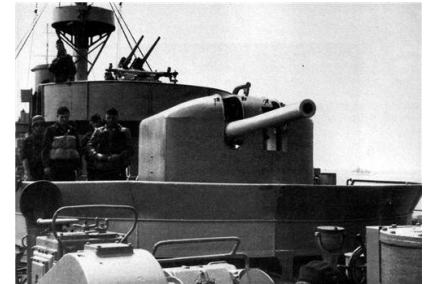
Auxiliary minesweeper 14 (Sperrbrecher 14)

ex- M/S Bockenheim

Builder: Kockums, Malmö, Sweden
Gross tonnage: 7,019
Dimensions, m: 147.50 x 18.50 x 8.8
Speed, knots: 15.0
Armament: 2 x 105/42mm
4 x 37mm
5 x 20mm
The crew: 46 – ... (wartime)

Auxiliary minesweeper No14, 1942

Owner: W.Wilhelmsen, Oslo
Completed as norweg. *Tai Ping* cargo ship 6.1929
Service:
Civilian: W.Wilhelmsen, Oslo 6.1929 – 5.25.1940
Seized by German forces in Oslo, name *Bockenheim* 5.25.1940
Registered as a Auxiliary minesweeper *No14* 11.30.1940
2 Auxiliary minesweeper Flotilla 11.30.1940 – 8.25.1944
Heavy damaged of exploding mines 12.12.1942
Fate: Expanded as block-ship *Basseins (Gironde)* 8.25.1944,
1947 she was later raised and broken up.



105/42mm gun Sperrbrecher No14



Auxiliary minesweeper 15 (Sperrbrecher 15)

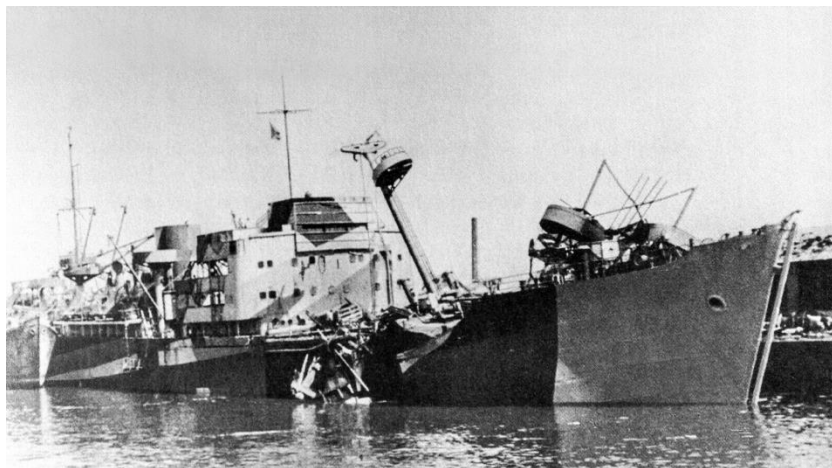
ex- M/S Taronga

Builder: Odense S Yd, Danemark
Gross tonnage: 7,003
Dimensions, m: 148.0 x 18.70 x 8.8
Speed, knots: 16.0
Armament: 2 x 105/42mm
4 x 37mm
3 x 20mm
The crew: 46 – ... (wartime)

Owner: W.Wilhelmsen, Oslo
Completed as norweg. *Taronga* cargo ship 5.1934
Service:
Civilian: W.Wilhelmsen, Oslo 5.1934 – 8.15.1940
Seized by German forces 8.15.1940
Registered as a Auxiliary minesweeper *No15* 8.15.1940
1 Auxiliary minesweeper Flotilla 8.15.1940 – 1943
Fate: Auxiliary minesweeper *No15* was sunk by Allied aircraft
6.8.1942 in Elbe mouth., salved 1943. After repair - target ship,
returned owner 1945



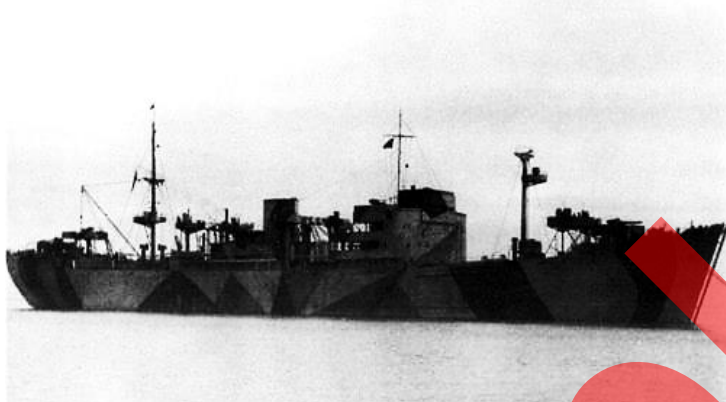
Drawing Auxiliary minesweeper No15
(1942)



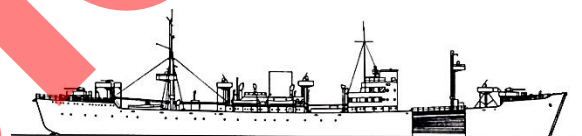
**Auxiliary minesweeper 16
(Sperrbrecher 16)
ex- M/S Tulane**

Builder: Akers, Oslo, Norway
Gross tonnage: 5,487
Dimensions, m: 137.80 x 17.4 x 7.8
Speed, knots: 15.0
Armament: 2 x 105/42mm
6 x 37mm
6 x 20mm
The crew: 38 – ... (wartime)

Auxiliary minesweeper No16, 1944



Auxiliary minesweeper No16, 1942



Drawing Auxiliary minesweeper No16, 1942



Auxiliary minesweeper No16, 1942

Owner: W.Wilhelmsen, Oslo.
Completed as norweg. *Tulane* cargo ship 5.5.1934
Service:
Civilian: W.Wilhelmsen, Oslo 5.1934 – 8.1940
Seized by German forces in Oslo 8.1940
Registered as a Auxiliary minesweeper No16 11.16.1940
2 Auxiliary minesweeper Flotilla 11.16.1940 – 8.11.1944
Bombed Allied aircraft La Pollice 9.16.1943
Raised and restored 4.1944
Bombed Allied aircraft 8.11.1944
Raised and restored 2.1949
Civilian: norw. *Tulane* 2.1949 – 6.11.1965
panam.*Aristandros* 6.11.1965 - 1970
Fate: 9.1971 scrapped in Shanghai.